

# SERVICE MENU



UNIQUE | CALMING | HEALING

## DAY PASS

90-min three touchless therapies and all day tea bar  
and locker room access

**\$89**

### Red Light Therapy

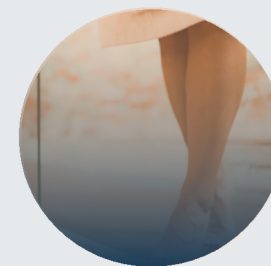
Boosts collagen, reduces inflammation  
and accelerates recovery.

### Somadome Meditation

Combines light and sound therapy for  
deep relaxation.

### PEMF BioBalancing Treatment

Enhances circulation and cellular  
healing.



## SpaSpace HOURS

Monday	Private parties only
Tuesday	10am to 7pm
Wednesday	10am to 7pm
Thursday	10am to 7pm
Friday	10am to 7pm
Saturday	10am to 7pm
Sunday	10am to 6pm

Loved your service? Book a party! Products used  
in our treatments are available for purchase online  
or in spa. Visit [SpaSpace.com](https://www.SpaSpace.com).



What have you done for you lately?™

Prices are subject to change without notice.  
22% service fee added at checkout.

161 N Canal Street, Chicago, IL 60606  
312.466.9585 [www.SpaSpaceChicago.com](https://www.SpaSpaceChicago.com)

## INFRARED SAUNA

Private full-spectrum infrared sauna, with medical-grade chromotherapy. Deeply penetrating heat supports detoxification, pain relief, and relaxation. Includes free Elixir for Members.

	Regular	Member
One Sauna Session	\$69	\$39
Package of Four	\$139	
Package of Eight	\$239	

## MASSAGE & BODY WORK

Includes Locker Room, Amenities and Aroma Steam Shower.

Signature Experience	Regular	Member
60-min massage + infrared sauna + PEMF + Somadome + red light		
120 minutes	\$229	\$195
Expert Massage		
Integrated modalities or select Deep Tissue, Pressure Point, Sports, Swedish, and/or Stretching.		
120 minutes	\$289	\$235
90 minutes	\$215	\$179
60 minutes	\$160	\$119
Package of Six	\$890	
Couples 60 minutes	\$340/per couple	

### Express Massage

No locker room. Tu-Fri only.

60 minutes	\$135	\$99
------------	-------	------

### Reiki Energy

90 minute session with Massage	\$240	\$195
45 minute session	\$115	\$79

### Hot Stone or Cupping Massage

90 minutes	\$245	\$204
------------	-------	-------

### Couples Massage

Expert Massage in our couples suite. Priced per pair.

60 minutes	\$340	\$250
------------	-------	-------

### Expert Foot Massage

Includes PEMF therapy, foot scrub, hydrating mask, pain relieving oil

30 minutes	\$85	\$55
------------	------	------

### Prenatal or Postnatal

Includes Somadome session and 60-min massage for all stages.

80 minutes	\$199	\$145
------------	-------	-------

## ENHANCEMENTS

Hot Stones/Dry Brush/Cupping	\$30/ea	\$25/ea
CBD/Body Butter/ Aromatherapy	\$20/ea	\$15/ea
Poultice - heated heral pack	\$30/ea	\$25/ea

## WELLNESS PERKS

Extend your relaxation and rejuvenation with our wellness perks. Great for athletic recovery. Add a **Day Pass** (PEMF, Somadome, Red Light), **Infrared Sauna**, or **Red Light Body Therapy** onto any booking for **only \$39 each** (\$49 for non-members).

# MEMBERSHIPS

Elevate your self-care with a SpaSpace Chicago **Monthly Membership**.

- Wellness Perk 1x/month
  - Redlight + Somadome + PEMF
  - Infrared Sauna Session
  - Red Light Suite
- Member Prices
- 10% off Retail
- Birthday Gift
- Events



## GREEN MEMBERSHIP

**\$199/year**

Unlock member pricing and perks without a monthly visit commitment

## SAUNA MEMBERSHIP

<p><b>Unlimited LONGEVITY</b> whole body well-being <b>\$199/mo</b></p>	<p><b>8x RENEW</b> recovery health <b>\$159/mo</b></p>	<p><b>4x RELAX</b> rejuvenate &amp; restore <b>\$99/mo</b></p>
---	--	--

## SPA MEMBERSHIP

<p><b>90-min ELEVATE</b> Massage or Hydrafacial <b>\$179/mo</b></p>	<p><b>60-min BALANCE</b> Massage or Facial <b>\$119/mo</b></p>	<p><b>Unlimited Waxing SMOOTH</b> Face+Body <b>\$129/mo</b></p>
---	--	---

Valid at SpaSpace Chicago. Membership renews monthly with a three-month minimum. Cancel anytime afterward. No rollovers.

## RED LIGHT THERAPY

Boost recovery, skin vitality, and overall well-being with full-body red light therapy in a private, restorative setting.

One Red Light Therapy session	Regular	Member
	\$69	\$39

## SKINCARE & HYDRAFACIAL

Includes Locker Room, Amenities and Aroma Steam Shower. **Discovery SkinKit** adds take-home starter products at a special price, and are curated especially for you.

HydraFacial	Regular	Member
Platinum Facial™	\$325	\$295
Signature Facial w/ Booster + LED	\$250	\$225
Express Facial	\$200	\$179
Add Lymphatic or Eye/Lip Perk	\$75	\$65

<b>Signature Microdermabrasion</b>	\$260	\$218
Correct, exfoliate, soothing biocellulose mask		

### SkinCeuticals™ Physicians' Favorite

Correct, protect, peel, brighten, nourish, replenish

Contour & Glow	\$265	\$219
Facial Only	\$225	\$179

### Organic Male OM4™ Facial

Curated, botanical, bright eyes, transforming

Facial + Discovery SkinKit	\$265	\$229
Facial + Peel & Beard Treatment	\$210	\$169
Facial + Peel	\$180	\$139

### Epicuren™ Skin Replenishing Facial

Personalized, exfoliating, nourishing, targeted, rejuvenating

Facial + Peel & Mask, Instant Lift	\$210	\$165
Facial Only	\$160	\$119

<b>Express Facial</b>	\$115	\$79
-----------------------	-------	------

## ENHANCEMENTS

Specialty treatments designed to enhance your facial results and skin's radiance. Esthetician recommended and range from **\$25-\$50**

- Microdermabrasion
- Ultimate Eye Treatment
- Biocellulose Mask
- Microcurrent

## EXTEND YOUR FACIAL

Adding both time and specialization, you can extend your facial for **only \$39 each** (\$50 for non-members).

- Lymphatic Drainage
- Extra Facial Time
- Red Light (LED) Therapy